

Society for Pentecostal Studies/ 2025 Presidential Address



Pentecostals on the *Move*

DR. LOIS E. OLENA, MARCH 15, 2025 (NORTHWEST UNIVERSITY, KIRKLAND, WA)

**“I was a stranger
and you took me in” —
Pentecostal Responses to the
Refugee Crisis**



Find us on Facebook:
SPS Practical Theology
Interest Group

Abundance at the Margins: Thinking Pentecostally about the Intersection of Disability- and Refugee Statuses

to 20 minutes to present and
word count or a page count,



March 14, 2024



How Did I Get Here?

Identity?

Calling?

Who Am I?

**As a Pentecostal
within the
Pentecostal
Movement,
what *and who*
am I moving
toward?**



**As we face a
world on the
move, we must
see that
*something
remarkable is
about to happen.***



- **People**
- **The Earth**
- **The Nations**
- **The Kingdom**

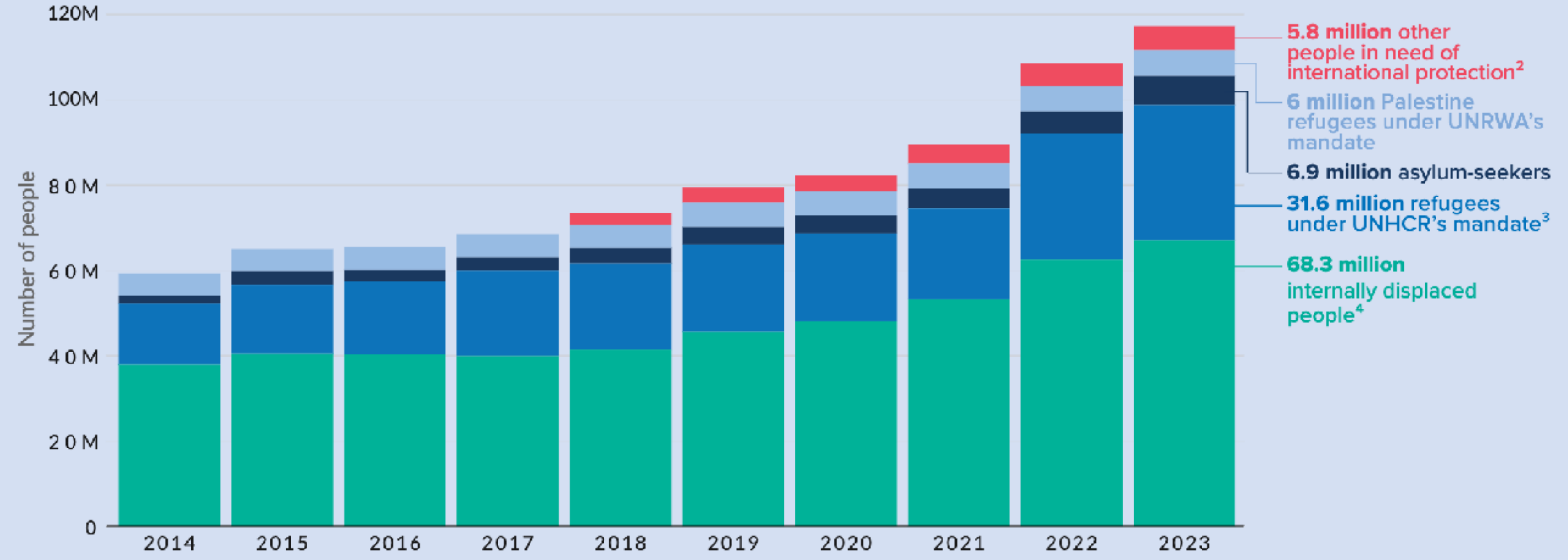
What Must I See?

The People

117.3 MILLION

FORCIBLY DISPLACED WORLDWIDE¹

at the end of 2023 as a result of persecution, conflict, violence, human rights violations or events seriously disturbing public order.



Migrants

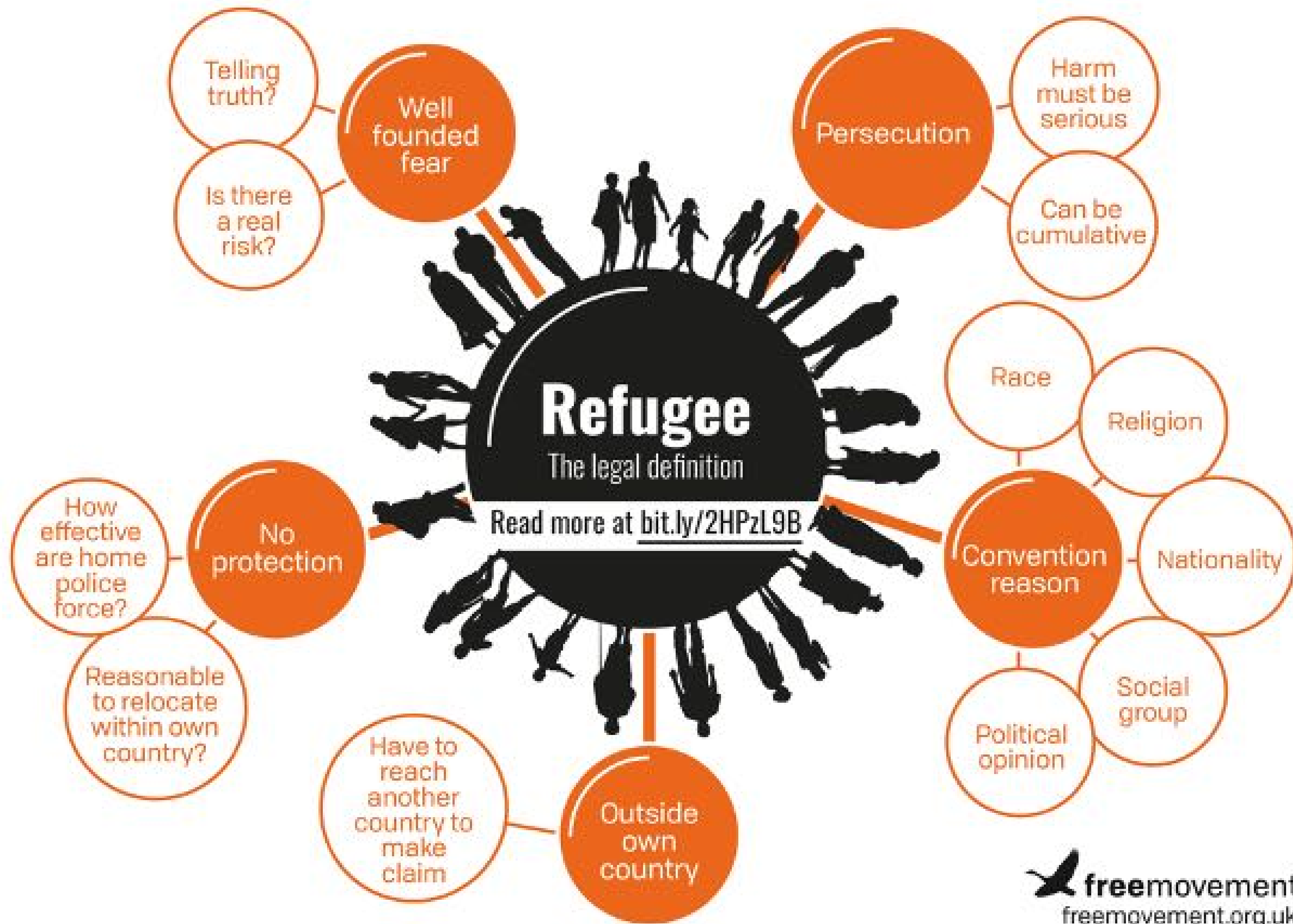
Immigrants

International Immigrants

Internally Displaced Persons

Refugees

Asylees



The Earth



CLIMATE DISPLACEMENT

[HTTPS://WWW.REFUGEESINTERNATIONAL.ORG/CLIMATE-DISPLACEMENT/](https://www.refugeesinternational.org/climate-displacement/)



The Nations

SYRIAN REFUGEE CRISIS (2015)



Figure 2.5 The eastern Mediterranean route from the Middle East to Europe in 2015. (ABC-CLIO)

Syrian Immigrants I flew with from Doha to Chicago, FA22



← Dickinson, *Human Migration*, 95, Kindle.

The Kingdom

“The more that non-immigrants step up to partner with immigrants, the more we see the **exchange of hope and passion** that can fuel sustained work for change.”

—Alexia Salvatierra



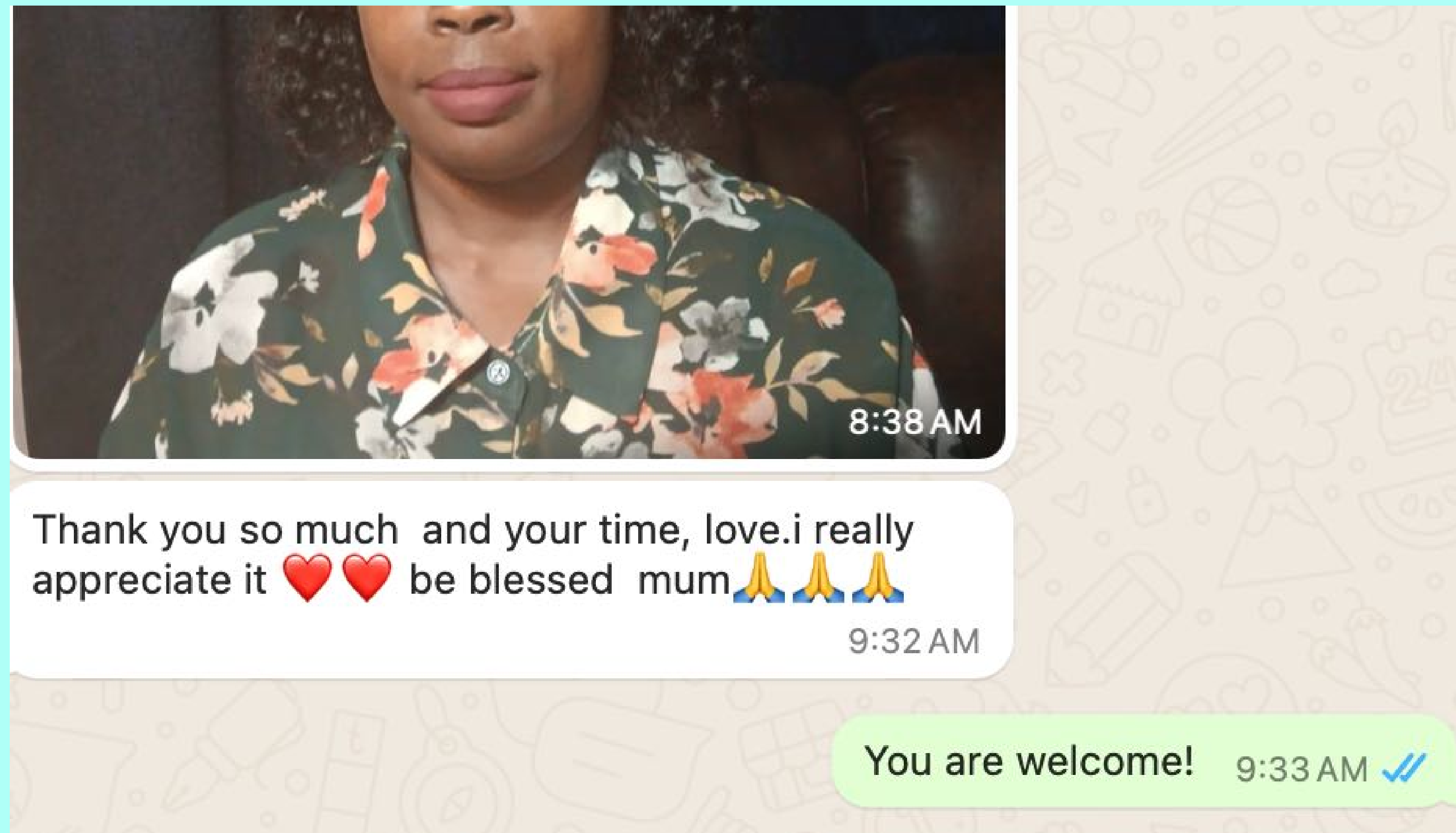
“Since the preaching of Jesus, the kingdom of God has been inaugurated on earth, and we are invited to reject earthly social and structural sins of oppression toward the immigrant. ... [I]nstead of appealing to current political views and ideologies ... **we need to allow the values of the kingdom of God to shape and influence our views of the immigrant.** ... We must always continually ask ourselves if our views of the immigrants are reflective of Roman imperial values or of God’s Kingdom. Most importantly, **we must also continue to live in such a manner that our views of the immigrant and actions toward them will testify that we are members of God’s Kingdom.**”

Estrada, “Immigrants and the Kingdom of God,” 632–33.



The Kingdom





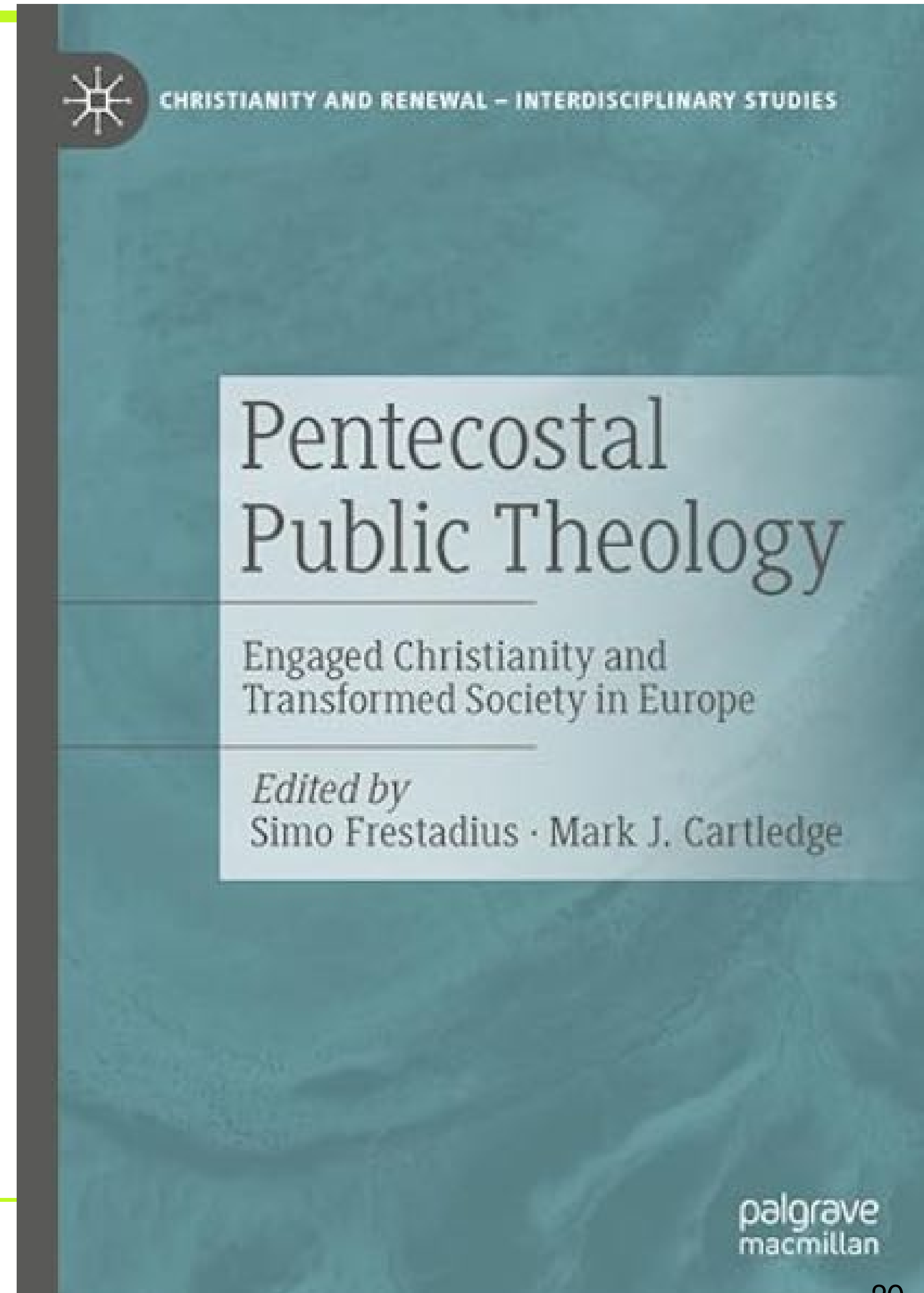
What Do We Need to Engage?



Cultural Humility

What Do We Need to Engage?

- **Cultural Humility**
- A Pentecostal **Public Theology** on Immigration



What Do We Need to Engage?

- Strategic and Sustaining **Partnerships**
 - Intra-denominationally
 - Ecumenically
 - Through Interfaith Relationships
 - With Secular Organizations

What Do We Need to Engage?

- Strategic and Sustaining Partnerships



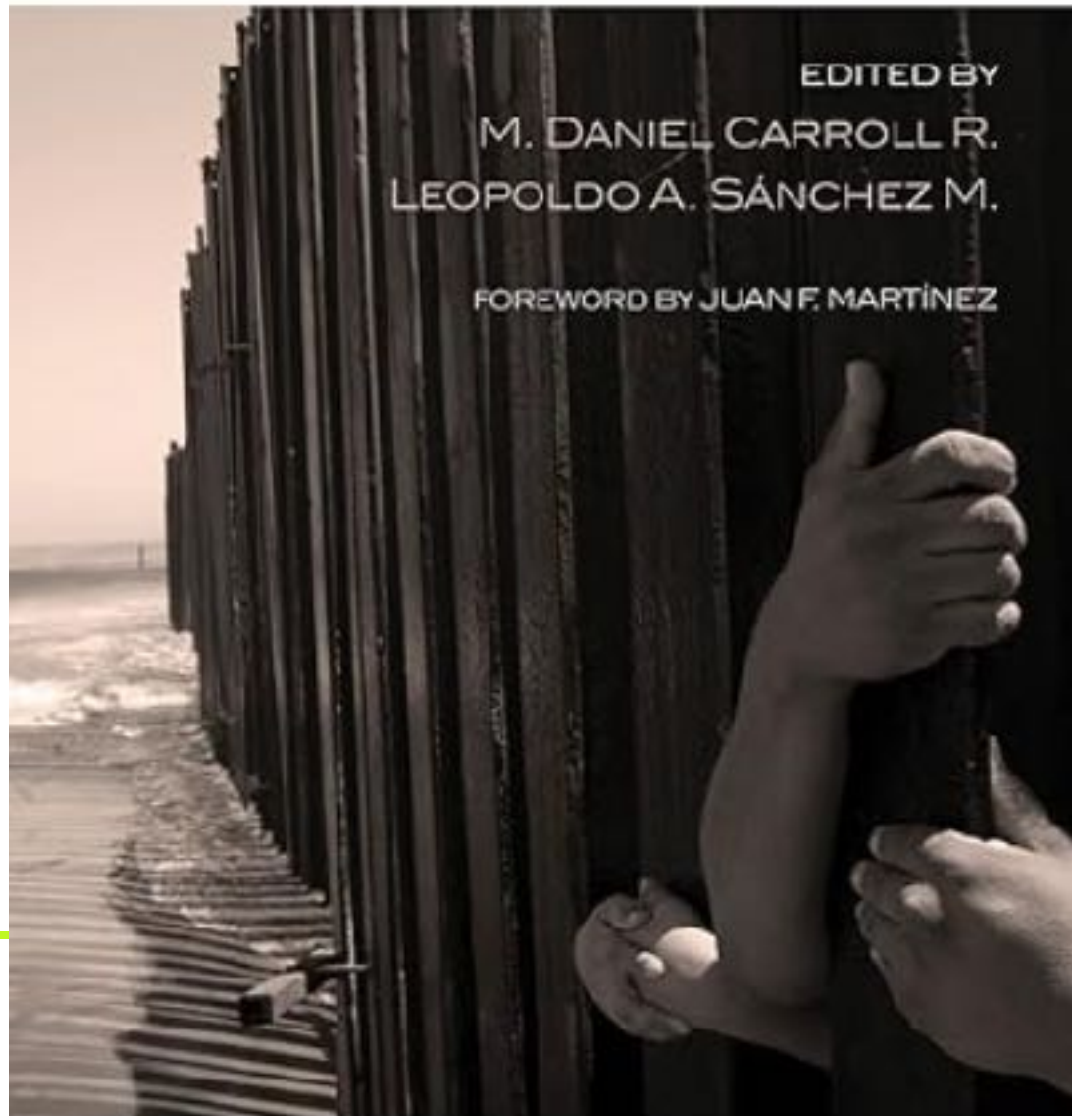
IMMIGRANT
NEIGHBORS
AMONG US

IMMIGRATION ACROSS THEOLOGICAL TRADITIONS

EDITED BY
M. DANIEL CARROLL R.
LEOPOLDO A. SÁNCHEZ M.
FOREWORD BY JUAN F. MARTÍNEZ



**SEASON OF
CREATION**



What Do We Need to Engage?

- Pentecostal **Power**

“...**divine experiences alter the ethnoracial perspectives** of the ancient world. They have the potential to fundamentally transform people who were ethnoracially hostile and suspicious toward one another. ... awareness of similar divine experiences should lead us to a renewed communion among God’s people because God is not ethnocentric. **Our divine experiences with God contain the potential for the emergence of genuine relations with one another.**”

A Pentecostal Response?



Society for Pentecostal Studies/ 2025 Presidential Address



Pentecostals on the *Move*

DR. LOIS E. OLENA, MARCH 15, 2025 (NORTHWEST UNIVERSITY, KIRKLAND, WA)